

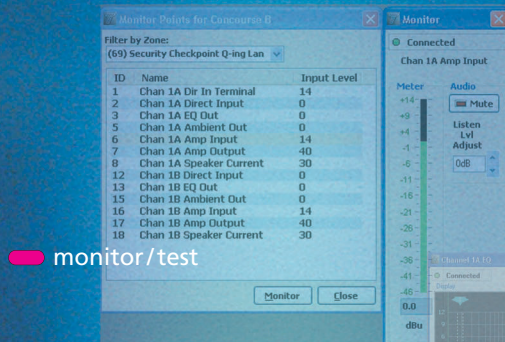


INTEGRATED AUDIO AND VISUAL SOLUTIONS

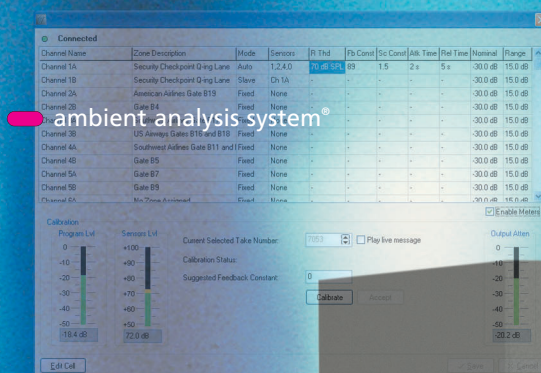
Titan Series

Digital Distribution

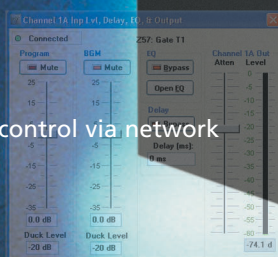
Products



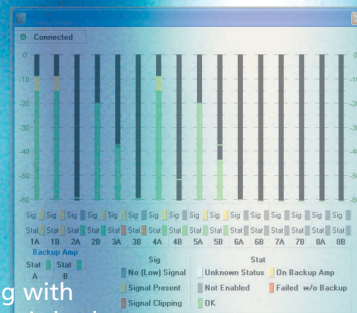
monitor/test



level control via network



amplifier testing with automatic backup



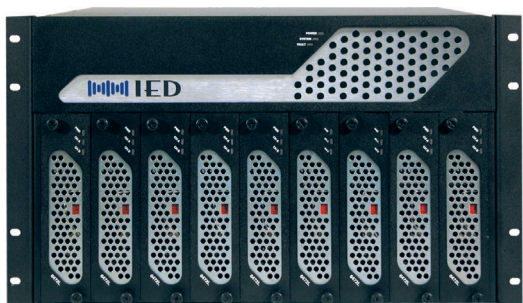
The Titan Series products and functions



Model T9160

DSP Power Amp Mainframe

The Power Amp Mainframe holds 9 Titan Series power amp cards, configured as 8 main cards plus 1 backup card. Each power amp card is either two-channels of 200 watts each or one-channel of 400 watts. The backup card is provided to automatically switch-over in the event of a main card failure. This mainframe also provides 16 channels of DSP, providing functions like: EQ, level control, delay, ambient noise analysis, page zone management, and automatic testing. The mainframe uses CobraNet® technology for digital audio input and output over a standard Ethernet network.



Model T9032DSP

DSP Node Distribution Unit

The Node Distribution Unit has 32 analog audio inputs and 32 analog audio outputs in addition to access to the IED digital audio bus, utilizing CobraNet® technology, for digital audio input and output over a standard Ethernet network. It bridges the analog and digital realms with the full power of DSP available to mix, filter, and otherwise process the signals. The DSP Node Distribution Unit is also available in 16 channel (T9016DSP) and 8 channel (T9008DSP) units.



Model T9032NS

Ambient Sensor Collector

The Ambient Sensor Collector provides the interface for up to 32 IED 540S ambient noise sensors. It connects to the T9160 or T9032DSP processors via the Ethernet network, passing real-time sensor readings for the integral ambient analysis signal processing.



Model T6400

Two-Card Power Amplifier Mainframe

The two-card mainframe holds any two Titan Series power amp cards. Each power amp card is either two-channels of 200 watts each or one-channel of 400 watts. The mainframe provides analog audio inputs and outputs for monitoring fan speed, temperature, and logic status.



Models of Titan Series Power Amplifier Cards

- T 6 4 7 2 Dual 200 Watt 70 Volt Power Amplifier Card
- T 6 4 7 1 Single 400 Watt 70 Volt Power Amplifier Card
- T 6 4 8 2 Dual 200 Watt 8 Ohm Power Amplifier Card
- T 6 4 8 1 Single 400 Watt 8 Ohm Power Amplifier Card
- T 6 4 4 1 Single 400 Watt 4 Ohm Power Amplifier Card
- T 6 4 1 1 Single 400 Watt 100 Volt Power Amplifier Card
- T 6 0 0 2 Dual Channel Line Driver Card (*line level interface*)



Models of Additional Titan Series Collector Units

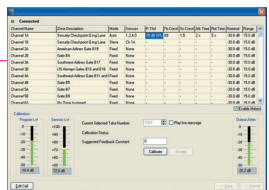
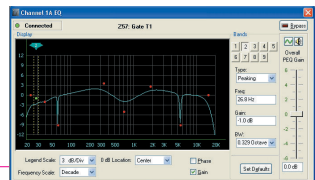
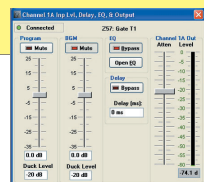
- T 0 5 1 6 B G M 16 channel Background Music Hub
- T 9 0 3 2 M T 32 input Monitor/Test Point Collector
- T 9 0 3 2 L V I O 32 input/output Logic/Voltage I/O Points



Titan Series Functions

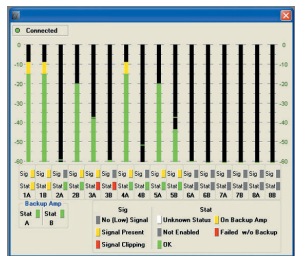
DSP Functions

- Level Control (BGM, Program, Paging) via Network
- Parametric Equalization
- Signal Delay
- Ambient Analysis System®
- BGM Mixing/Ducking for Pages
- Page Zone Management/Routing
- The DSP Node Distribution Units provide the additional processing functions of: Matrix Mixing/Combining, Mix-Minus Combining, Dynamic Matrix Routing, Cross-over Filtering, Compression, Limiting, Noise Gate, Automatic Mixer, Programmable Gain Controls, and more.



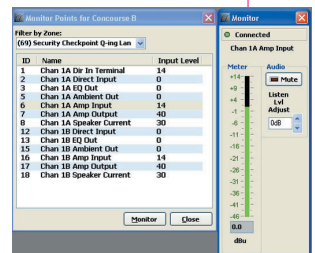
Supervision Functions

- Test settings are calibrated and set at the factory
- Contractor can test for ground faults in speaker lines prior to turning on amplifiers
- Changes in level settings won't affect the test settings
- Live Multi-Frequency Testing can be performed any time
- Full amplifier testing with automatic backup switchover
- Fan and temperature supervision
- Audio tracer on any point in the signal chain
- Separate test bus and monitor bus allows simultaneous operations



Network Audio Distribution Functions

- Dynamic Routing of Program Material, Background Music and Page Audio Management
- Monitor Audio Routing from Remote Frames





innovation



Innovative Electronic Designs
9701 Taylorsville Road
Louisville, KY 40299, USA
502.267.9070 fax
502.267.7436

www.iedaudio.com

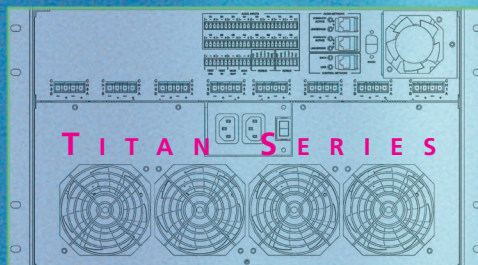
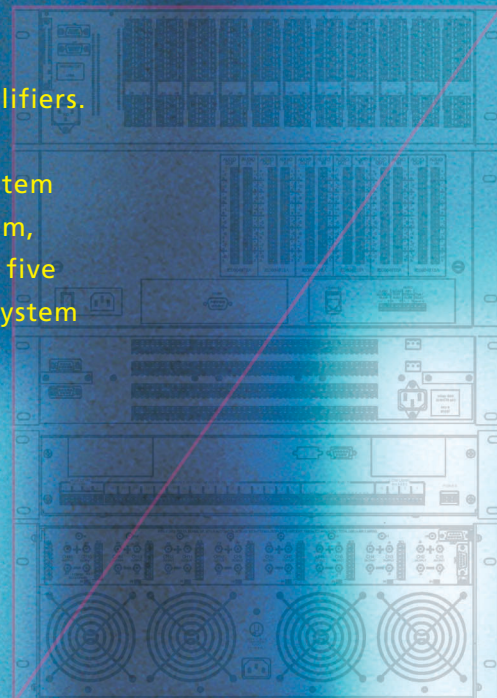
EASE OF INSTALLATION

Less Wiring – No interconnect wiring required.

Less Rack Space – Only one 6 RU component.

Less Power – Only one integrated mainframe with Class D power amplifiers.

In one 6RU component, the Titan Series T9160 DSP Power Amplifier System provides the equalization, Ambient Analysis System, Monitor/Test System, Power Amplifier System, and backup switching that previously came in five separate components. A remote processing and amplifier distribution system can be integrated simply with one network connection plus up to 16 loudspeaker circuit connections.



LESS Wiring
LESS Rack Space
LESS Power

ied leadership

The Titan Series Digital Distribution Products, with the 500ACS Announcement Control System*, provide the world's first voice announcement system that is distributed totally on an Ethernet Network directly from the mic station all the way to the power amplifiers.

The IED software architecture to control these products is building upon IT industry standard tools such as client/server and SQL server-enabled systems that can even be web based when appropriate. We use state-of-the-art development environments like Microsoft®.Net, and are constantly enhancing the IED software tools for user power and ease.

From the first computer controlled voice paging system in 1982, to the advent of the Titan Series in 2005, IED continues to lead the world in passenger and public communications.

**World Leader in Audio
and Visual
Communications**

**System Design,
Integration and Support
Your complete public
communications
provider**

Contact us today